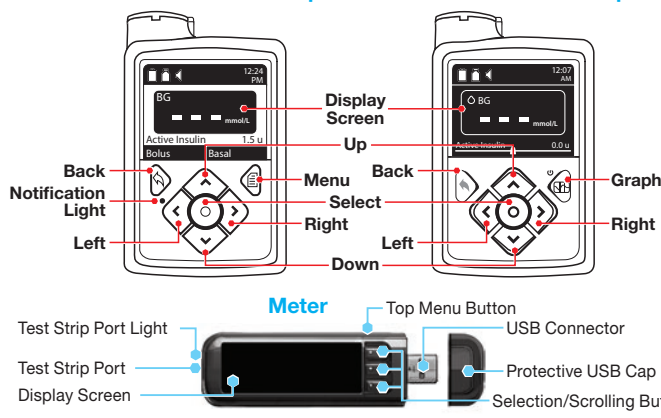




MiniMed[™] 670G pump is shown



QUICK REFERENCE GUIDE



NOTE: Check the units of measure of your meter.
See your meter user guide for complete instructions.

**Initial Setup of CONTOUR[®]NEXT LINK 2.4 Meter
and Connection to MiniMed[™] Insulin Pump**

Charging Meter

- 1** Remove the USB cap to reveal the USB connector.



The CONTOUR NEXT LINK 2.4 meter has a permanent rechargeable battery.

Charge your meter with the wall charger* or by plugging the USB connector into a computer. Be sure the computer is turned on.

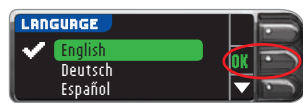
Your meter will briefly display “Do Not Test—Charging” and the test strip port light will flash. **You cannot do a blood glucose test while the battery is charging.** When charging is finished, the test strip port light will turn off. Unplug your CONTOUR NEXT LINK 2.4 meter to test.

Unplug Meter From Charging Source Before Beginning Setup

- 2** To begin setup, hold down the top Menu button for several seconds until the meter turns on.



- 3** Scroll down to select your language. Press **OK**.

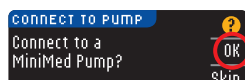


- 4** Press **OK** if the correct language is displayed. Press **NO** if the incorrect language is displayed.

Connect to Pump

Pump image screens are for illustration purposes only and may differ between the 630G and 670G pumps.

- 5** Connect to a MiniMed Pump? Press **OK**.



- 6** Press **OK**.

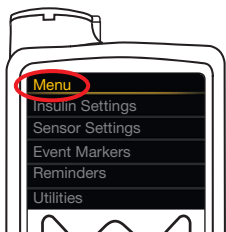


For the MiniMed 630G

- 7a** Press any button to turn the screen on.

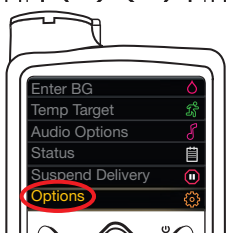
Press the **Menu** button . If your pump does not have a **Menu** button go to step 7b.

OR



For the MiniMed 670G

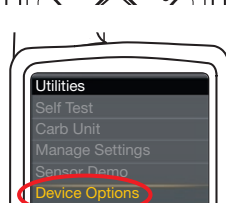
- 7b** Press the **Select** button . Use the **Down** arrow button to scroll to **Options**. Press **Select** button .



If pump screen goes blank, press any button to turn it back on.

- 8** Press the Down arrow button to scroll to **Utilities**.

Press **Select** button . In the Utilities menu, use the down arrow to scroll to **Device Options**. Press the Select button .



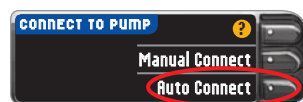
- 9** In the Device Options menu, scroll to **Connect Device**. Press the Select button .



- 10** Place the meter and pump next to each other. Select **Auto Connect** on your pump.

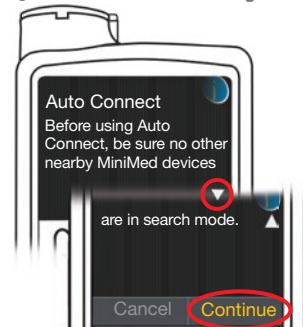


- Select **Auto Connect** on your meter.



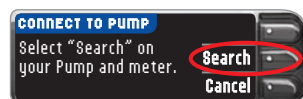
- 11** Read the pump screen, using the down arrow to scroll to the next page.

Use the arrow buttons to scroll to **Continue**. Press the Select button .

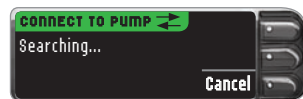


- 12** Place the meter and pump next to each other. Select **Search** on the pump.

- Select **Search** on the meter.

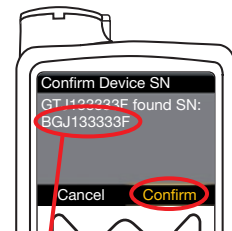


The search may take up to 2 minutes.



- 13** Check to see if Device SN (serial number) on the **pump** matches the Device SN on the **meter**.

If they match, scroll to **Confirm** on the pump. Press the Select button .

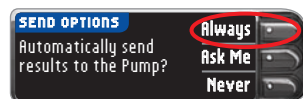


When the pump links to the meter, the SN on the **meter** screen will change to a different serial number. This number is the **pump SN**.

- 14** Turn the pump over. Make sure that the SN on the back of the **pump** matches the pump serial number now on the **meter** screen. Press **Next**.



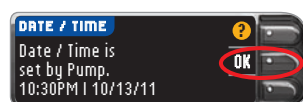
- 15** Select **Always** and press **OK** on next screen.



- 16** Select the **Date Format**.



- 17** Press **OK**.
Note: If time and date are incorrect, you must change them on the pump.



- 18** Press **Accept** to select **AutoLog is Off**.

AutoLog allows you to mark a test result as Fasting, Before Meal, or After Meal. See your user guide to learn more.



*Wall charger may not be included in all meter kits. Contact Customer Service for information on obtaining a wall charger.

19 Accept or Change High and Low Alerts.

The meter alerts you with a sound when your blood sugar level is above or below your set levels.



20 Accept or Change your Target range.

The Target range is your goal for your blood sugar test results.



NOTE: Alerts can only be set outside your selected Target Range(s). Targets can only be set inside your selected Alert level(s). For additional information, you may contact Customer Service. See contact information for Customer Service below.

21 Your system setup is now complete and ready to run a blood sugar test. Go to Step 1 below.

Setup is complete. Insert strip to start a test.

Materials for Testing



CONTOUR®NEXT Test Strip



Lancing Device



Lancet



CONTOUR®NEXT LINK 2.4 Blood Glucose Meter

! WARNING:

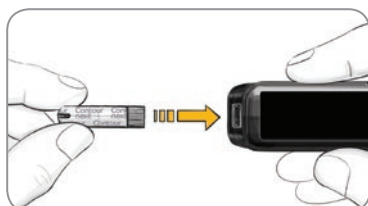
- The lancing device is intended for self-testing by a single patient. It must not be used on more than one person due to the risk of infection.
- Use a new lancet each time you test because it is no longer sterile after use.
- All parts of the kit are considered biohazardous and can potentially transmit infectious diseases, even after you have performed cleaning and disinfection.
- Always wash your hands well with soap and water before and after testing, handling the meter, lancing device, or test strips.

For complete instructions on cleaning and disinfecting your meter, please see your meter user guide.

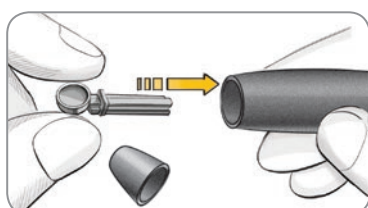
Testing Your Blood

Obtain Blood Drop

- 1 Insert the test strip and wait for the **APPLY BLOOD** message.

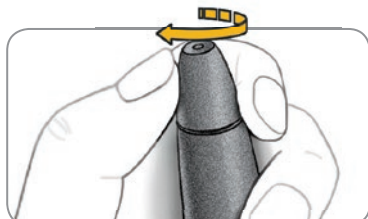


- 2 Remove the lancing device endcap. Insert the lancet firmly into the lancing device until it comes to a full stop.



The lancing device graphics are for illustration purposes only. Your lancing device may look different. Refer to your lancing device insert for detailed instructions on preparing the lancing device.

- 3 Replace the endcap. Rotate the endcap dial to adjust the puncture depth.

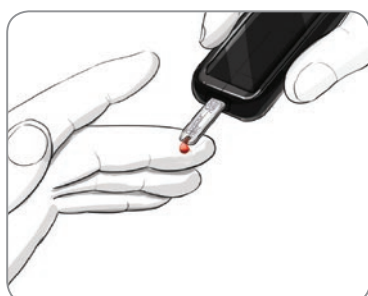


- 4 Obtain your blood drop.



Testing Blood Drop

- 5 Touch the tip of the test strip to the drop of blood. If the first blood drop is not enough, the meter will beep twice and display **STRIP UNDERFILLED**. You have about 30 seconds to apply more blood to the same strip.



NOTE: If AutoLog is ON, you are asked to mark your result as Fasting, Before Meal, or After Meal before your result displays. If your result is above your High Alert setting or below your Low Alert setting, you will see your result without having to make an AutoLog selection.

Sending Results to Your MiniMed Pump

- 6 If **Always** was selected in **Send Options** during **Setup**, results will be sent directly to your pump. If **Ask Me** was selected in **Send Options** during **Setup**, you can choose to send your result to your pump after each blood sugar test.



Press **Send** or **Don't Send**.

CAUTION: Always check the display on your pump to ensure that the glucose result shown agrees with the glucose result shown on the meter.

Bolus, Reminder and Notes

- 7 Select **Bolus** to send a bolus to your pump. Select **Reminder** to set a reminder for your next test. Select **Notes** to add more information to the result.



Confirm That Result Was Sent to Pump

- 8 Pick up your pump. Press and hold the Back button to get to the home screen. Your blood sugar result should display on the pump screen.



Turn Meter Off

- 9 Remove the test strip and the meter will turn off in 3 minutes. Or hold down the Menu button to turn off the meter.



See your CONTOUR NEXT LINK 2.4 user guide, lancing device insert and MiniMed pump user guide for full instructions.

For more information, go to www.ascensidiabetes.ca or contact Customer Service at: 1-800-268-7200

IVD For In Vitro Diagnostic Use



Manufactured for:
Ascensia Diabetes Care Holdings AG
Peter Merian-Strasse 90
4052 Basel, Switzerland

For information on patents and related licenses, see:
www.patents.ascensia.com

Medtronic

Ascensia, the Ascensia Diabetes Care logo, Clinilog, Contour, Glucofacts, and the No Coding logo are trademarks and/or registered trademarks of Ascensia Diabetes Care Holdings AG.

TM see www.ascensidiabetes.ca/tm-mc
www.ascensidiabetes.ca

Medtronic, the Medtronic logo, and MiniMed are trademarks of Medtronic.
© 2017 Ascensia Diabetes Care Holdings AG. All rights reserved.